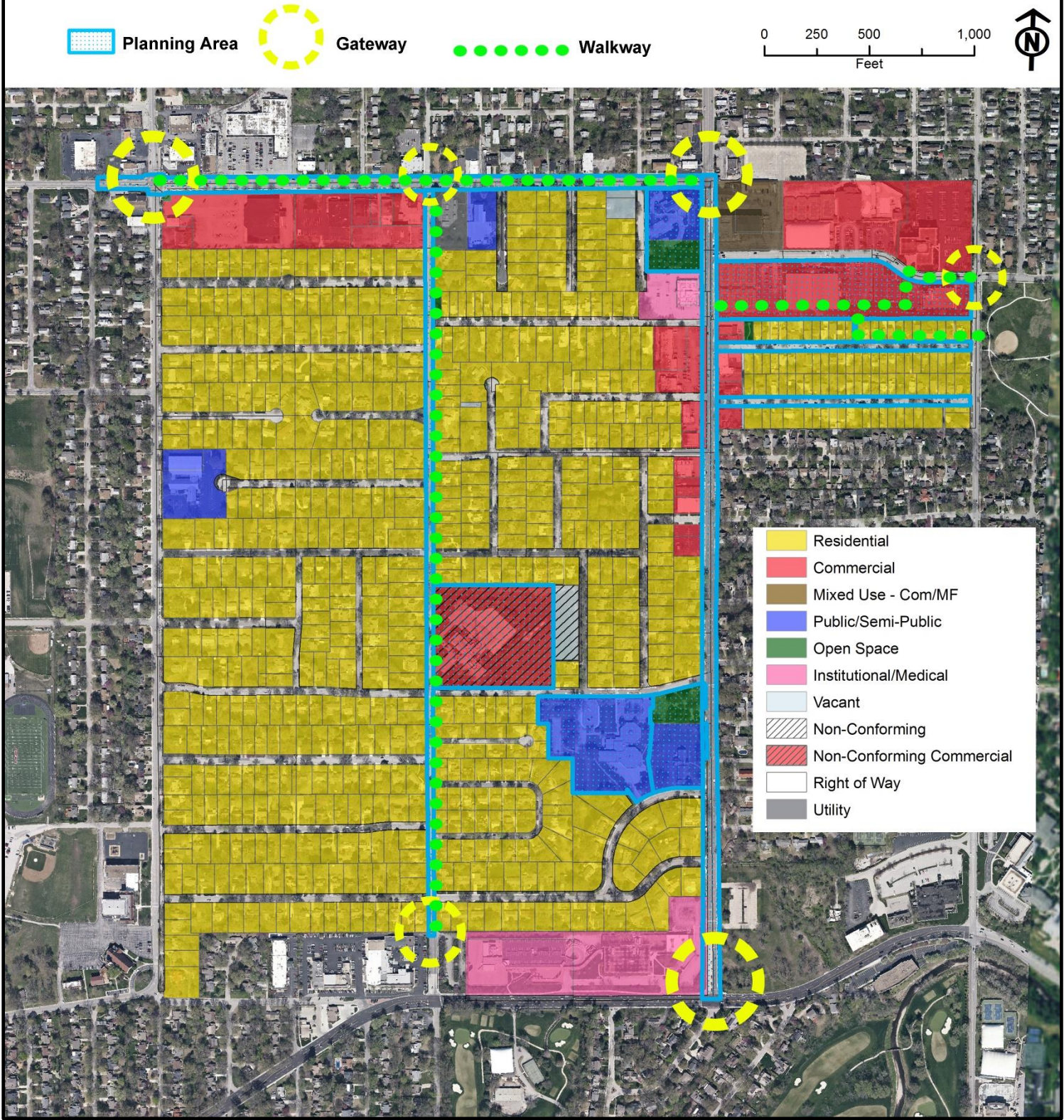


# City of Westwood - Framework Plan Map



The goal statements and related objectives are guiding principles of entire Master Plan process for Westwood, which acknowledge the City’s past while shaping the future and were developed to reflect the core values of the community. They describe the community’s aspirations and provide the framework for specific policies and direction of the Comprehensive Plan.

**GOAL A: MAKE SURE PROPERTIES ARE WELL-MAINTAINED THROUGHOUT THE COMMUNITY.**

OBJECTIVE A.1: Maintain existing properties while protecting community character and resources.

**GOAL B: REPRESENT A SENSE OF PLACE AND UNIQUE IDENTITY.**

OBJECTIVE B.1: Create attractive gateways and corridors in the community.

OBJECTIVE B.2: Promote unique components of the community.

**GOAL C: INCREASE ENGAGEMENT AND COLLABORATION.**

OBJECTIVE C.1: Align resources to coordinate community efforts.

OBJECTIVE C.2: Maintain current and develop additional community events and activities to meet the needs of all residents.

OBJECTIVE C.3: Improve communication between citizens, elected officials, and city staff.

OBJECTIVE C.4: Keep Westwood View Elementary in Westwood.

**GOAL D: SUPPORT EXISTING BUSINESSES AND CAPITALIZE ON REDEVELOPMENT OPPORTUNITIES.**

OBJECTIVE D.1: Maintain a strong, prosperous economy

OBJECTIVE D.2: Provide support for local businesses.

OBJECTIVE D.3: Cluster commercial development into designated commercial areas.

**GOAL E: ENSURE HOUSING STOCK MEETS FUTURE DEMANDS.**

OBJECTIVE E.1: Use existing housing stock to meet future demands.

OBJECTIVE E.2: Build new housing stock.

**GOAL F: INCREASE INVESTMENT IN INFRASTRUCTURE AND FACILITIES.**

OBJECTIVE F.1: Provide public facilities and infrastructure that serve existing and future residents.

OBJECTIVE F.2: Enhance walkability and bikeability of the community.

OBJECTIVE F.3: Improve mobility and parking throughout the community.

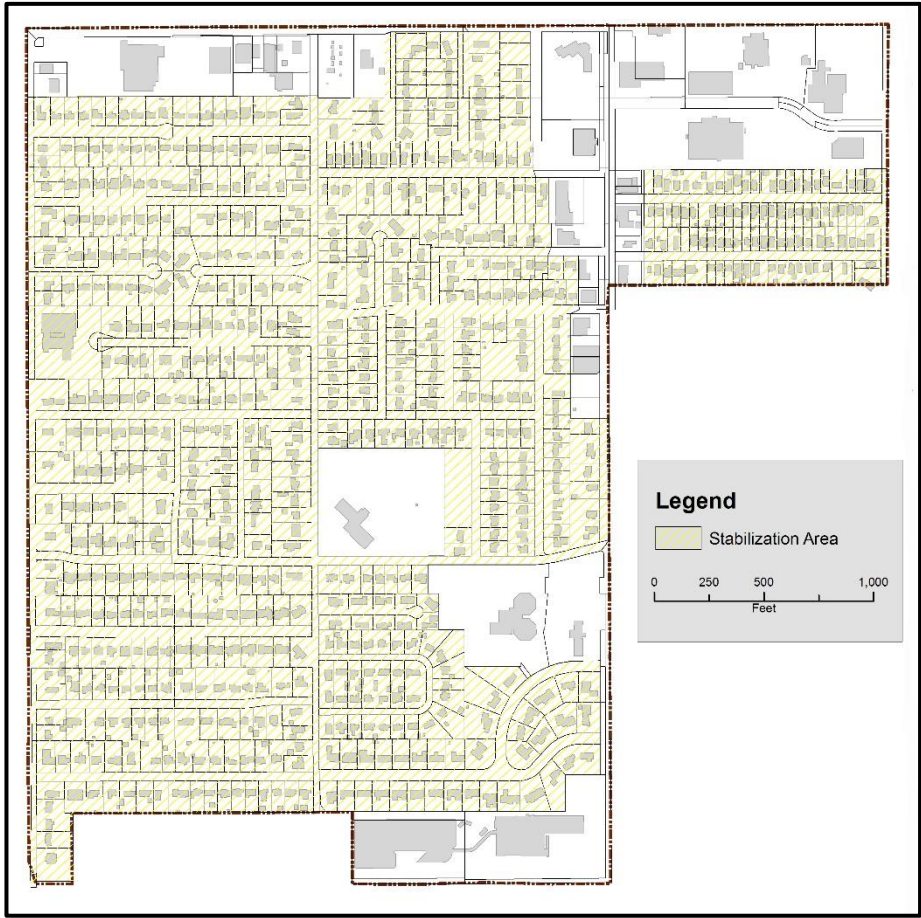


The Comprehensive Plan is a general guide to assist local civic and government leaders, business interests, and citizens to make informed decisions on development, efficient use of land, and anticipated changes to developed areas of Westwood. The **Framework Plan Map** was established to effectively guide future development in a way that will accomplish Westwood’s Vision and Plan Themes. When used in concert with the goals and policies, the Comprehensive Plan forms a basis on development and redevelopment decisions.

A community achieves its goals through leadership, vision, and determination. A key to future success lies in understanding and respecting the physical elements and business partnerships that promote the character and well-being of the community. Some examples that are worth preserving and protecting are:

- Well-maintained, unique detached single-family homes in stable neighborhoods.
- A strong relationship with Westwood View Elementary and the Shawnee Mission School District.
- Pedestrian-friendly street design with mature trees lining the streets.
- Significant business partners, such as the University of Kansas Hospital Authority, Midwest Transplant Network, and Woodside Health & Tennis Club.
- Park and open space with a variety of amenities.

The purpose of this Comprehensive Plan is to provide the City of Westwood, Kansas a policy basis for making land use and community development decisions.



**Stabilization Policy Area**

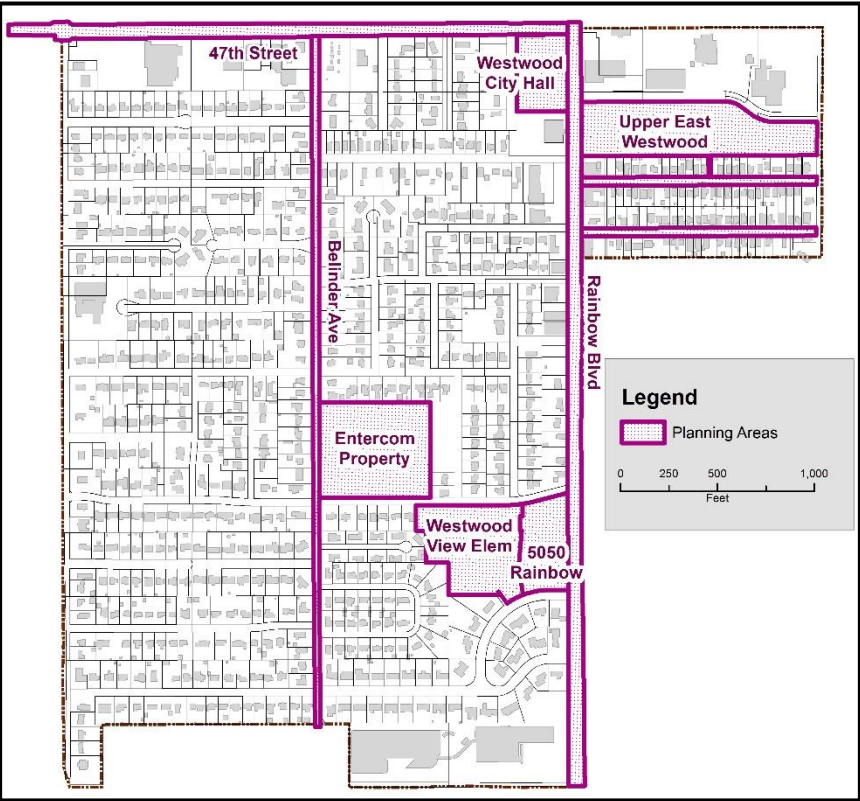
These are areas in Westwood where the current residential character is maintained and enhanced and the land use is not anticipated to change.

Many of the policies noted in the Comprehensive Plan document look to foster active neighborhood environments, maintain and improve residential properties and streets.

- *Protect the character and quality of established residential areas, particularly areas with single-family homes, from the intrusion of incompatible land uses and excessive through traffic.*
- *Encourage new residential housing construction to be consistent with existing community character*
- *Promote the development of housing that will grow attendance at Westwood View Elementary School..*

Planning decisions that are consistent with the goals and vision statement help to ensure the City’s ability to achieve desired outcomes for a healthy, thriving, and sustainable future. From this, the Comprehensive Plan is based on three Plan Themes: Character, Choice, and Collaboration

CHARACTER	CHOICE	COLLABORATION
<ul style="list-style-type: none"><li>• Promote and protect the neighborhood character of existing single-family detached homes</li><li>• Respecting the scale and design of the existing built environment</li><li>• Community civic spaces &amp; additional open green space areas</li><li>• Defined gateways and corridors</li><li>• Property maintenance &amp; codes enforcement</li><li>• Unique and distinctive identity</li></ul>	<ul style="list-style-type: none"><li>• Encourage the reinvestment and improvement of existing housing</li><li>• Provide homes for all ages and a broader market demand</li><li>• Encourage family occupancy while facilitating a housing rental market</li><li>• Improved mobility</li><li>• Pedestrian and bicycle improvements</li></ul>	<ul style="list-style-type: none"><li>• Assist the school district with planning for the future</li><li>• Existing and new residences – listen to the past, look to the future</li><li>• Local businesses, patrons and visitors</li><li>• Greater collaboration with neighboring municipalities and other elected officials</li><li>• Partnerships with agencies that can build upon a shared understanding of values and culture to support mutual needs of the community</li></ul>



**Planning Areas**

The eight (8) different Planning Areas are those locations within the community where through this planning process Westwood has explored and conveyed a number of desired land use outcomes for the future when redevelopment activity occurs.

The reality of whether or not changes can occur depends on many factors, some outside of the control of the City. If one piece falls into place, others may follow.