

BUILDING INFORMATION

MAIN BUILDING:

FIRST FLOOR -	22,509 SF RETAIL/SERVICE SPACE:	ELEV. 940'
SECOND FLOOR -	37,654 SF OFFICE SPACE:	ELEV. 958'
THIRD FLOOR -	37,654 SF OFFICE SPACE:	ELEV. 972'
FOURTH FLOOR -	14,699 SF OFFICE SPACE:	ELEV. 986'

PAVILIONS:

NORTH BUILDING -	4,090 SF RETAIL/OFFICE SPACE	ELEV. 958'
SOUTH BUILDING -	7,843 SF RETAIL/OFFICE SPACE	ELEV. 958'

DEVELOPMENT TOTAL: 124,449 GROSS SF

PARKING SPACES INFORMATION

171 COVERED SPACES
125 SURFACE SPACES
296 TOTAL PARKING SPACES
2.4 PARKING SPACES PER 1,000 SF

PROJECT STATISTICS

A24

FIRST FLOOR SITE PLAN

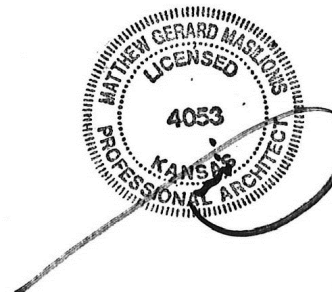
A01

Perspective

2000 SHAWNEE MISSION PKWY
SUITE 100
MISSION WOODS, KS 66205

816 502 1500

WWW.PAD.STUDIO



MATTHEW MASLUCINIS - ARCHITECT
KANSAS # 4053

I have prepared the drawings and assume responsibility for the sheets numbered with an "A" prefix for the project named below.

Other drawings and specifications attached for the above-mentioned project have been by and are the responsibility of the licensed engineer whose stamp and firm appear on that sheet.

The Architect is not responsible for the design of the mechanical, electrical, plumbing, civil, landscaping, structural, signage (not specified), fire sprinkler or fire suppression systems, and does not take responsibility for the compliance of these areas with the laws of the above governmental entities. The architect is not responsible for materials, components or equipment, as well as the method in which they are installed on the project by others. The architect is not liable or responsible for certification, during construction or upon completion of construction. The architect is not responsible for improper operation due to faulty installation or product failure during construction or after completion of construction when operation has begun by the landlord or tenant.

The licensed professional whose stamp appears on sheets other than those specifically noted above shall be responsible for those items in paragraph three.

CONSULTANT

KARBANK
REAL ESTATE COMPANY

PROJECT

**50TH AND
RAINBOW
DEVELOPMENT**

50TH ST. & RAINBOW BLVD.
WESTWOOD KS, 66205

MARK DATE DESCRIPTION

SHEET TITLE

**ARCHITECTURAL
SITE PLAN**

PROJECT NUMBER

2021073.000

SHEET AUTHOR

K. MILLER

CHECKED BY

M. PAXTON

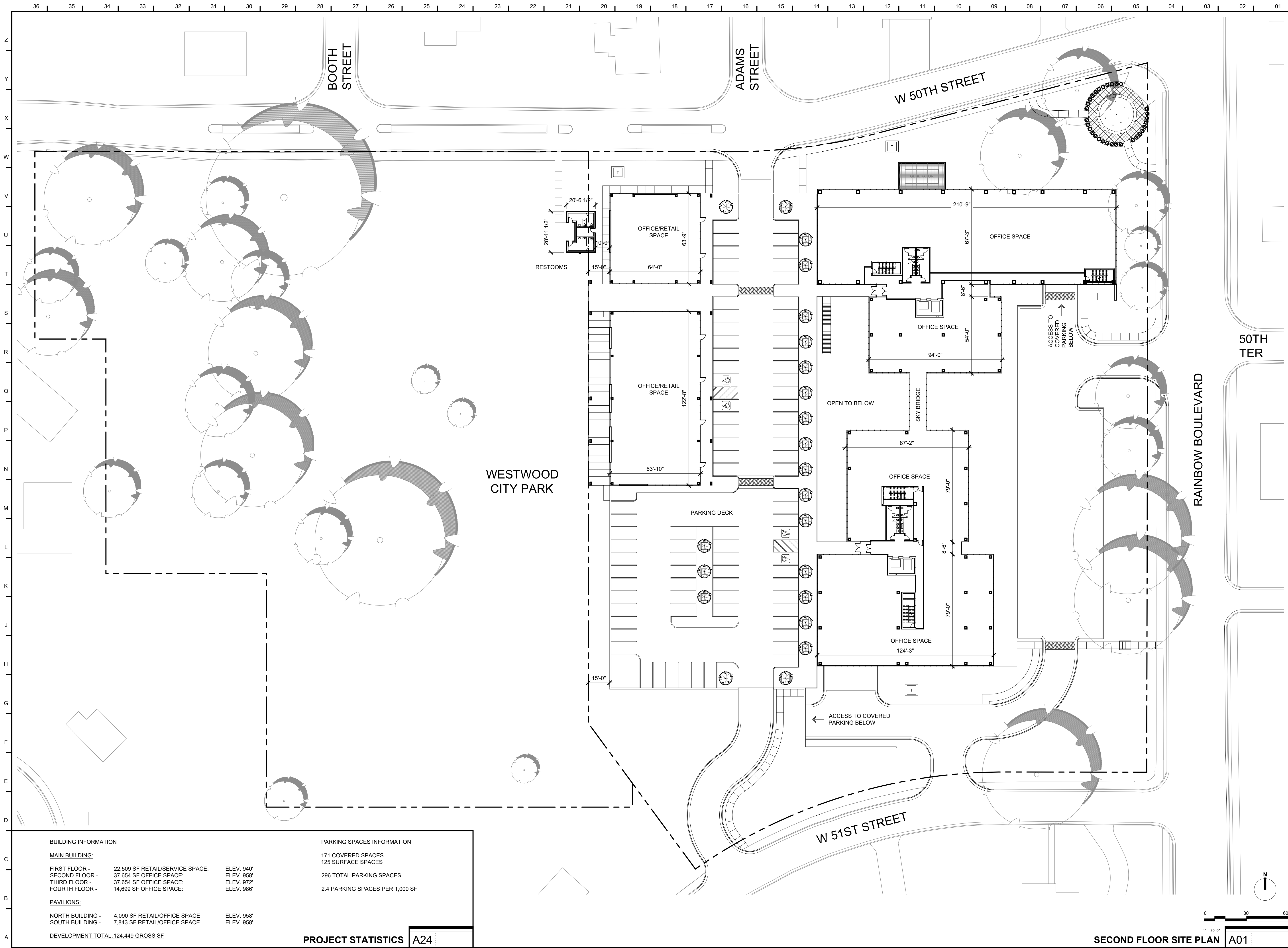
DATE

7.20.23

PDP SUBMITTAL

SHEET NUMBER

AS101



BUILDING INFORMATION

MAIN BUILDING:

FIRST FLOOR -	22,509 SF RETAIL/SERVICE SPACE:	ELEV. 940'
SECOND FLOOR -	37,654 SF OFFICE SPACE:	ELEV. 958'
THIRD FLOOR -	37,654 SF OFFICE SPACE:	ELEV. 972'
FOURTH FLOOR -	14,699 SF OFFICE SPACE:	ELEV. 986'

PAVILIONS:

NORTH BUILDING -	4,090 SF RETAIL/OFFICE SPACE	ELEV. 958'
SOUTH BUILDING -	7,843 SF RETAIL/OFFICE SPACE	ELEV. 958'

DEVELOPMENT TOTAL: 124,449 GROSS SF

PARKING SPACES INFORMATION

171 COVERED SPACES
125 SURFACE SPACES
296 TOTAL PARKING SPACES
2.4 PARKING SPACES PER 1,000 SF

PROJECT STATISTICS

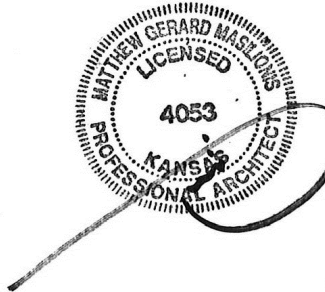
A24

Perspective
ARCHITECTURE

2000 SHAWNEE MISSION PKWY
SUITE 100
MISSION WOODS, KS 66205

816 502 1500

WWW.PAD.STUDIO



MATTHEW MASLUCINIS - ARCHITECT
KANSAS # 4053

I have prepared the drawings and assume responsibility for the sheets numbered with an "A" prefix for the project named below.

Other drawings and specifications attached for the above-mentioned project have been by and are the responsibility of the licensed engineer whose stamp and firm appear on that sheet.

The Architect is not responsible for the design of the mechanical, electrical, plumbing, civil, landscaping, structural, signage (not specified), fire sprinkler or fire suppression systems, and does not take responsibility for the compliance of these areas with the laws of the above governmental entities. The architect is not responsible for materials, components or equipment, as well as the method in which they are installed on the project by others. The architect is not responsible for certification, during construction or upon completion of construction. The architect is not responsible for improper operation due to faulty installation or product failure during construction or after completion of construction when operation has begun by the landlord or tenant.

The licensed professional whose stamp appears on sheets other than those specifically noted above shall be responsible for those items in paragraph three.

CONSULTANT



PROJECT

50TH AND RAINBOW DEVELOPMENT

W 50TH ST. & RAINBOW BLVD.
WESTWOOD KS, 66205

MARK DATE DESCRIPTION

SHEET TITLE

ARCHITECTURAL SITE PLAN

PROJECT NUMBER

2021073.000

SHEET AUTHOR

K. MILLER

CHECKED BY

M. PAXTON

DATE

7.20.23

PDP SUBMITTAL

SHEET NUMBER

AS102

SECOND FLOOR SITE PLAN

A01





KARBANK
REAL ESTATE COMPANY

Perspective
ARCHITECTURE + DESIGN



OFFICE

OFFICE

APPAREL

5050

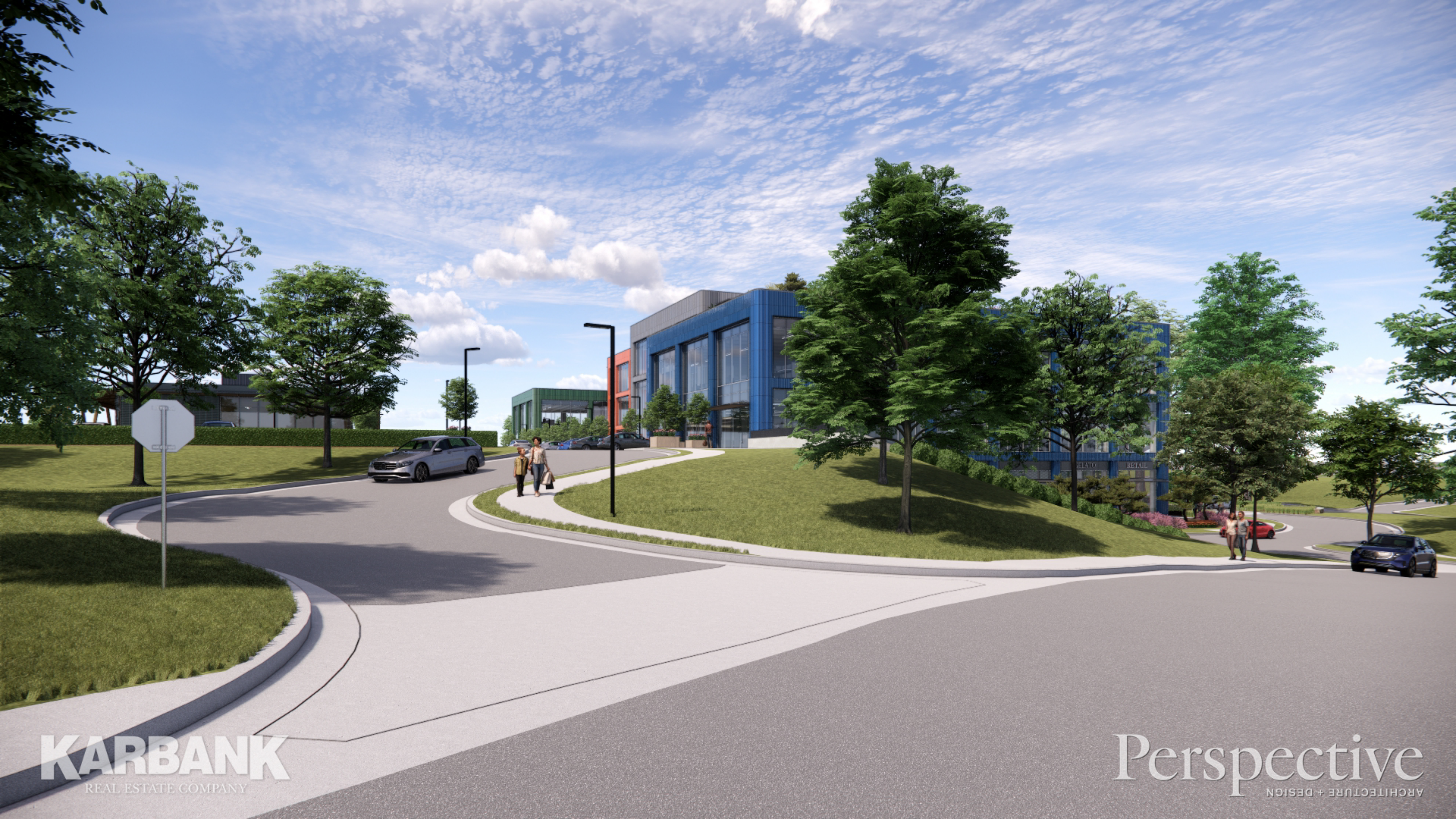




KARBANK
REAL ESTATE COMPANY

Perspective
ARCHITECTURE + DESIGN









KARBANK
REAL ESTATE COMPANY

Perspective
ARCHITECTURE + DESIGN





KARBANK
REAL ESTATE COMPANY

Perspective
ARCHITECTURE + DESIGN



